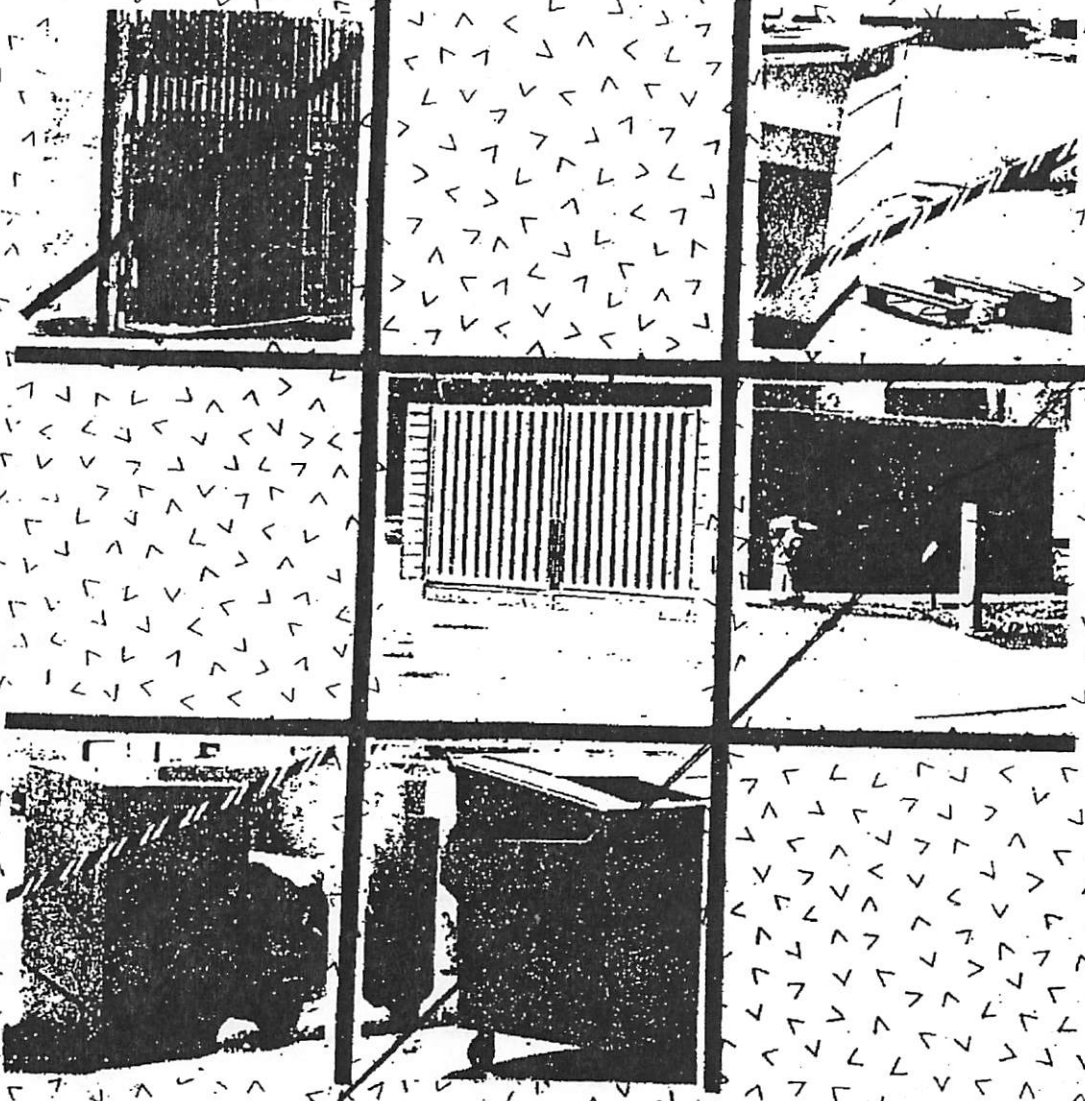


trash enclosures



Specifications
City of Desert Hot Springs
dept. of community development

STANDARD TRASH ENCLOSURE

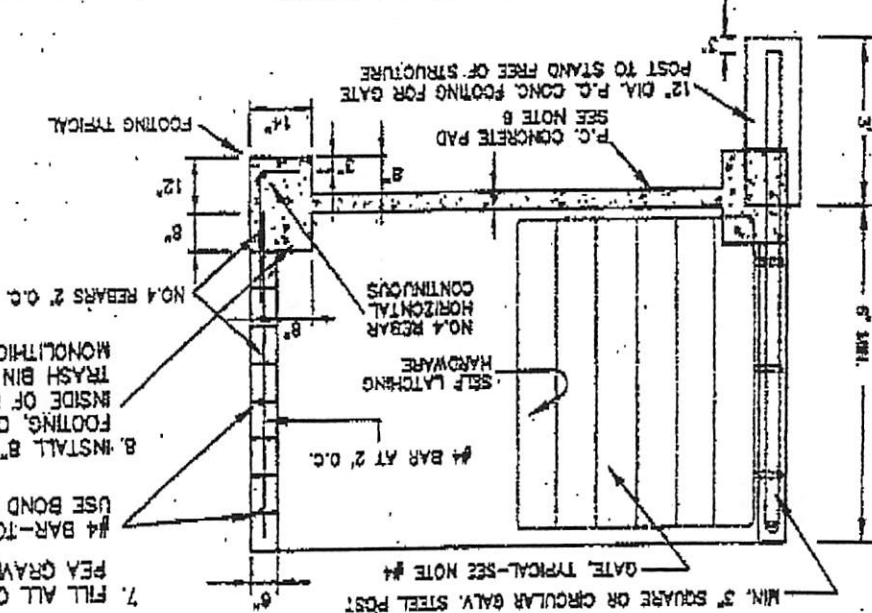
CITY OF DESERT HOT SPRINGS



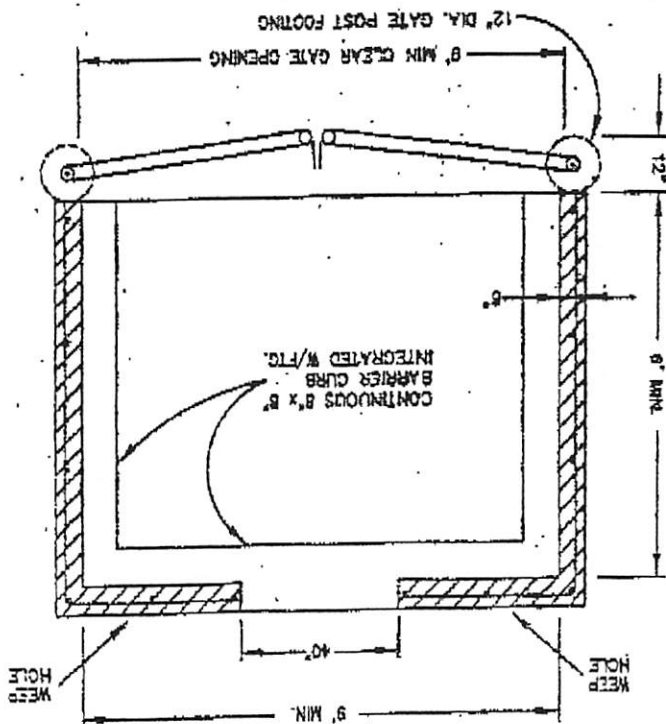
GATE POST FOOTING DETAIL

-
- TRASH AREA TO BE LOCATED SO AS TO BE ACCESSIBLE TO BOTH DEPOSIT AND PICKUP. LOCATION TO BE APPROVED BY PLANNING DEPARTMENT.
 - THE 40" WIDE OPENING FOR CUSTOMER ACCESS MAY BE PROVIDED ON ANY SIDE OF THE BLOCK WALL SUBJECT TO PLANNING DEPARTMENTS APPROVAL.
 - SIX INCH MASONRY BLOCK CONSTRUCTION WITH STANDARD STEEL REINFORCING RODS. FILL ALL CELLS WITH GROUT AND SMOOTH TOP WITH STEEL TROWEL FINISH.
 - METAL GATES WITH HEAVY DUTY HARDWARE (TYPICAL) METAL PANEL GATES SHALL TOTALLY OBSCURE THE TRASH BINS, AND SHALL BE ARCHITECTURALLY COMPATIBLE WITH THE PROJECT.
 - GATE POSTS SHALL BE MINIMUM 3" DIA. GALVANIZED STEEL SET IN CONCRETE TO STAND FREE OF THE ENCLOSURE STRUCTURE.
 - FOUR INCH P.C. CONCRETE PAD, TOP OF PAD TO BE AT GROUND OR EDGE OF PAVING LEVEL.
 - FILL ALL CELLS WITH P.C. CONCRETE #4 BAR-TOP AND MIDDLE HEIGHT USE BOND BEAM BLOCKS.
 - INSTALL 8" X 8" BARRIER CURBS WITH FOOTING, COMPLETELY AROUND INSIDE OF ENCLOSURE TO ACT AS TRASH BIN BUMPER GUARD. POUR MONOLITHICALLY WITH FOOTING.

FRONT ELEVATION VIEW

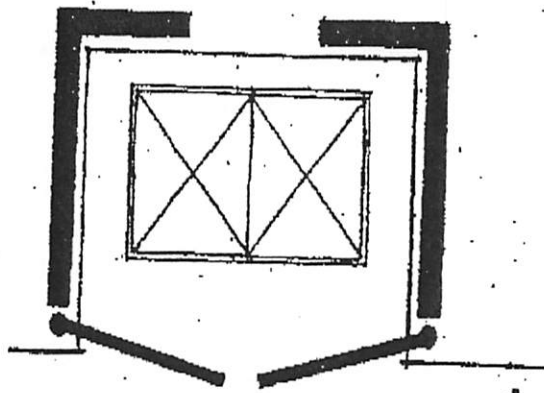


PLAN VIEW

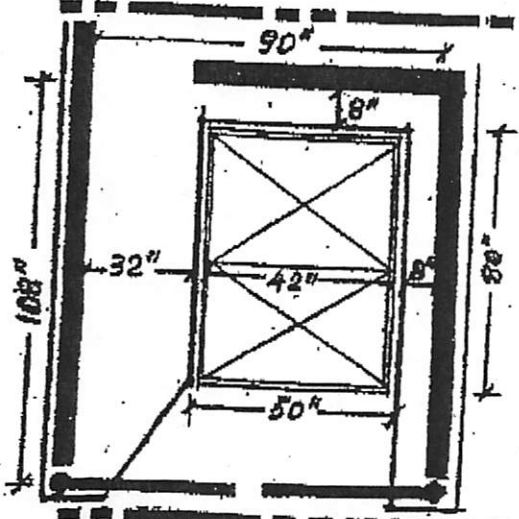


NOTES:

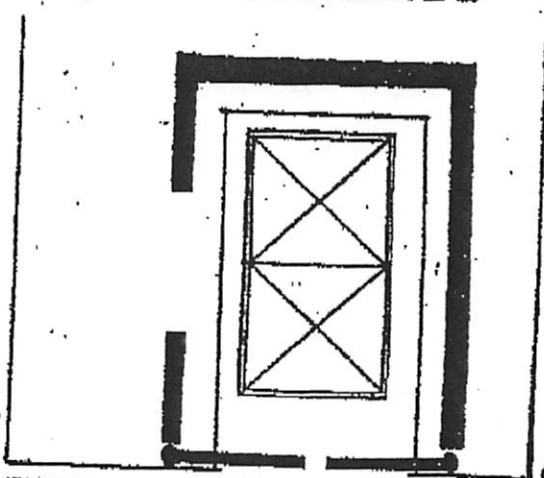
NO.	REVISIONS	APPROVED	DATE



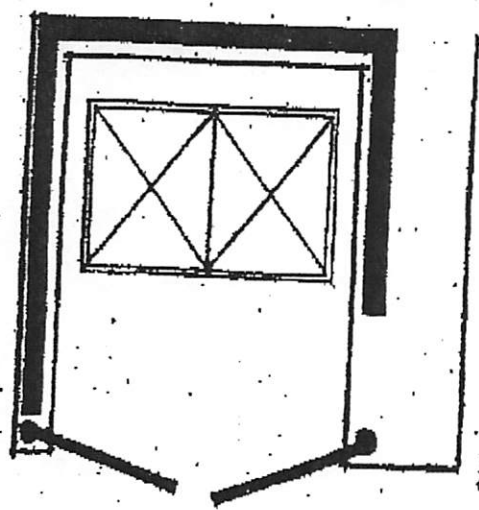
1



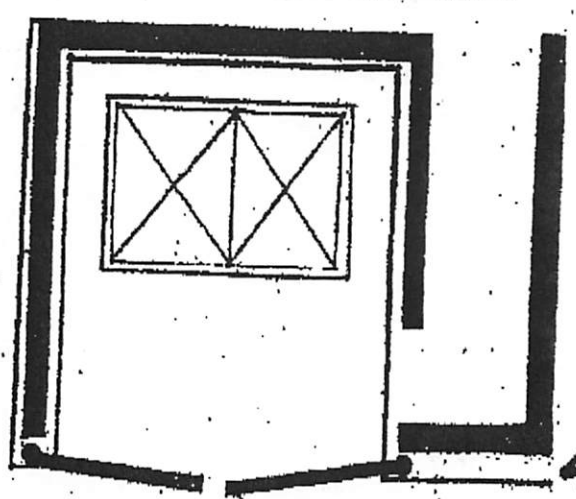
3



2



5



4

approved enclosures